

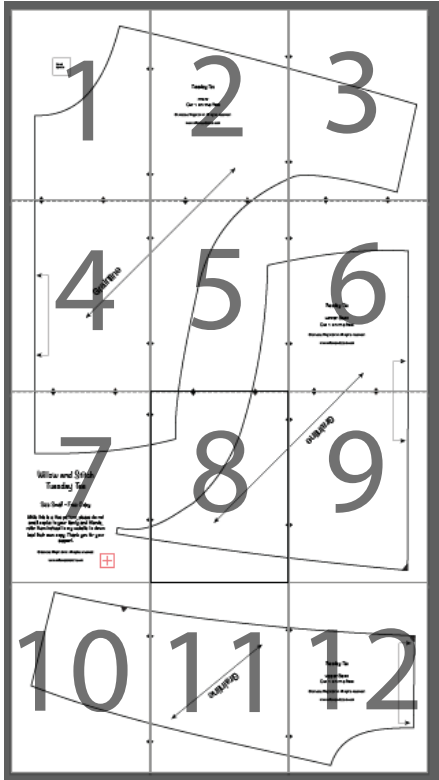


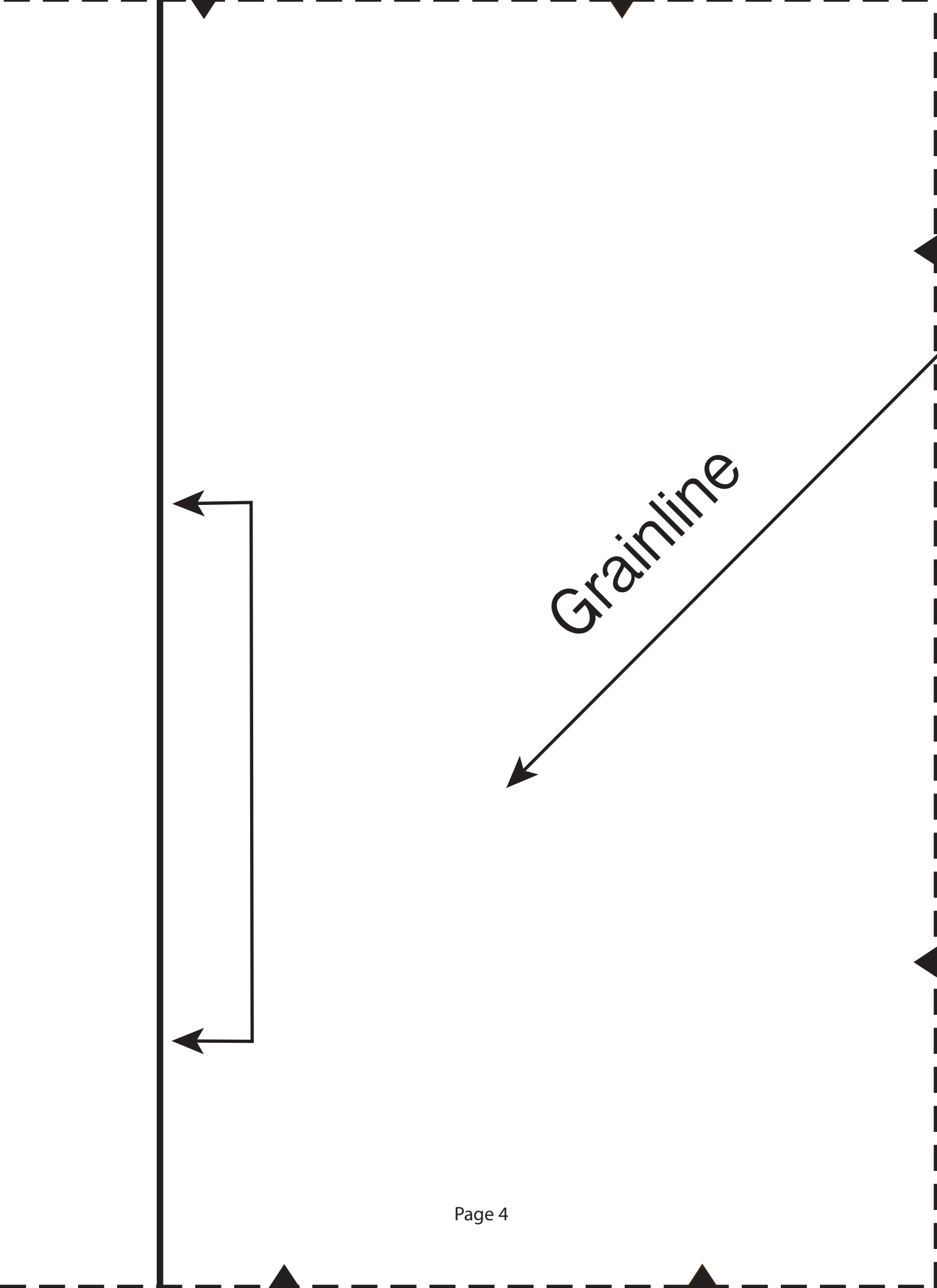
Tuesday Tee

Front
Cut 1 on the fold

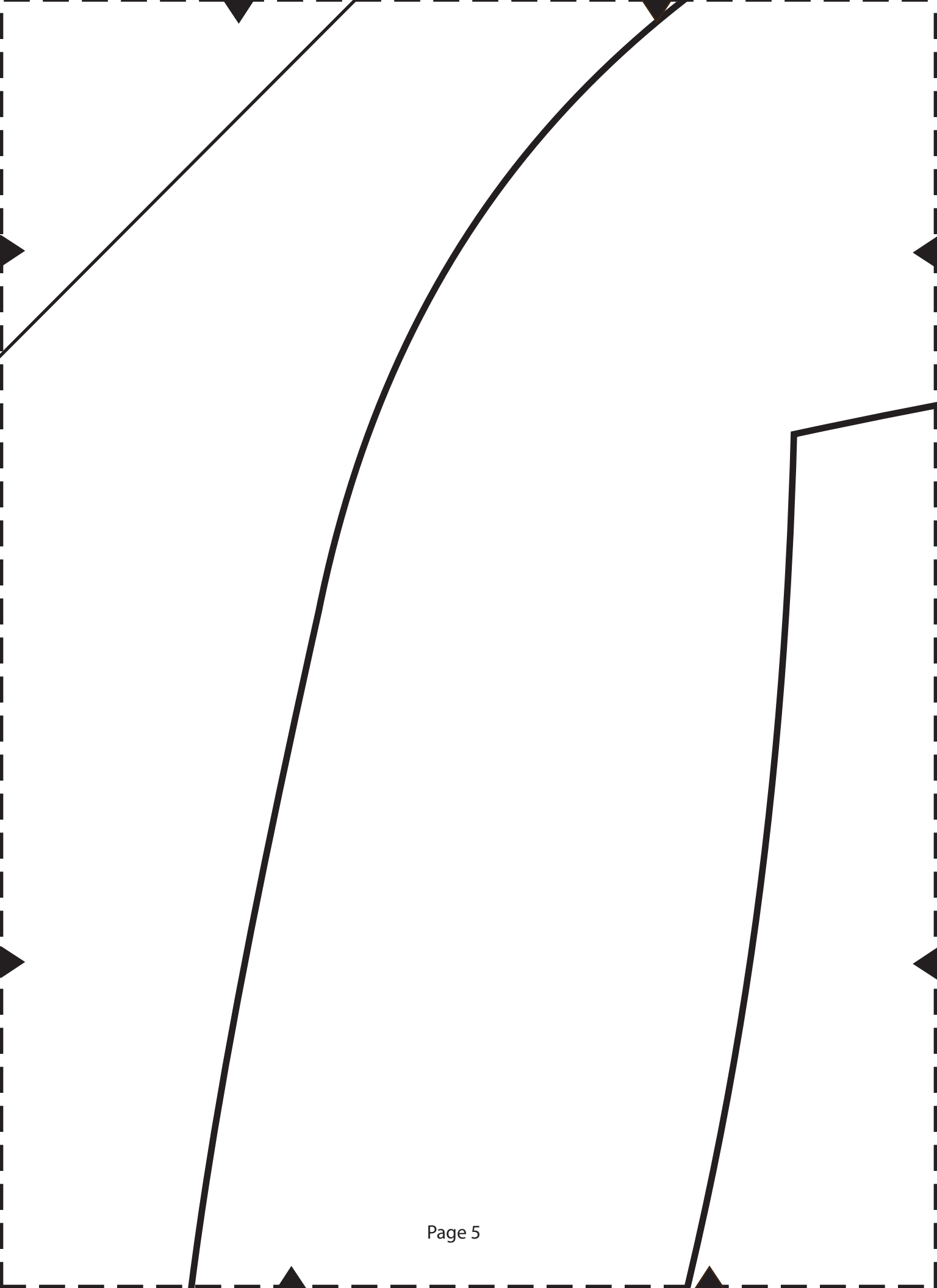
© Jessica Wright 2015. All rights reserved.

www.willowandstitch.com





Grainline



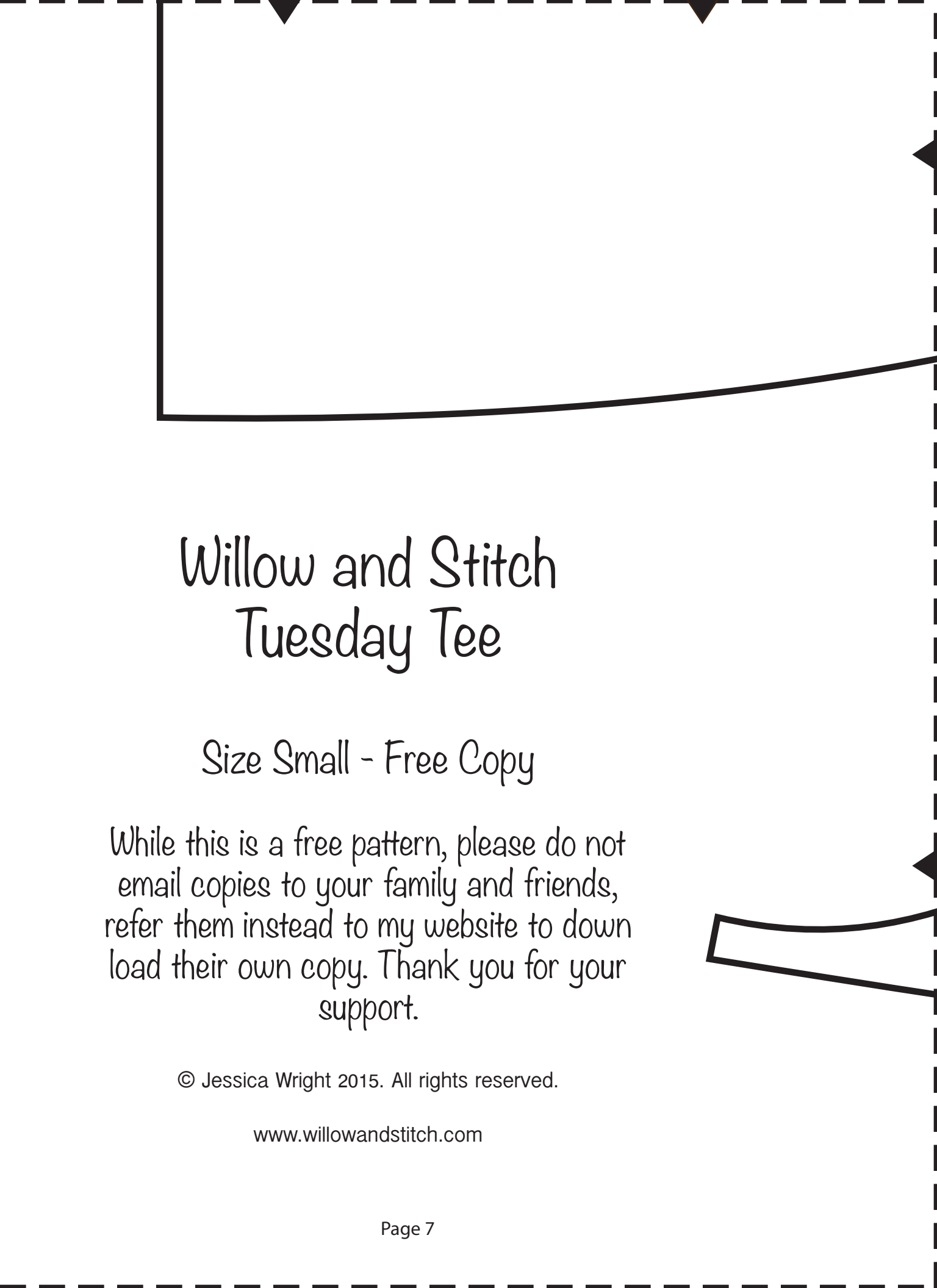


Tuesday Tee

Lower Back
Cut 1 on the fold

© Jessica Wright 2015. All rights reserved.

www.willowandstitch.com



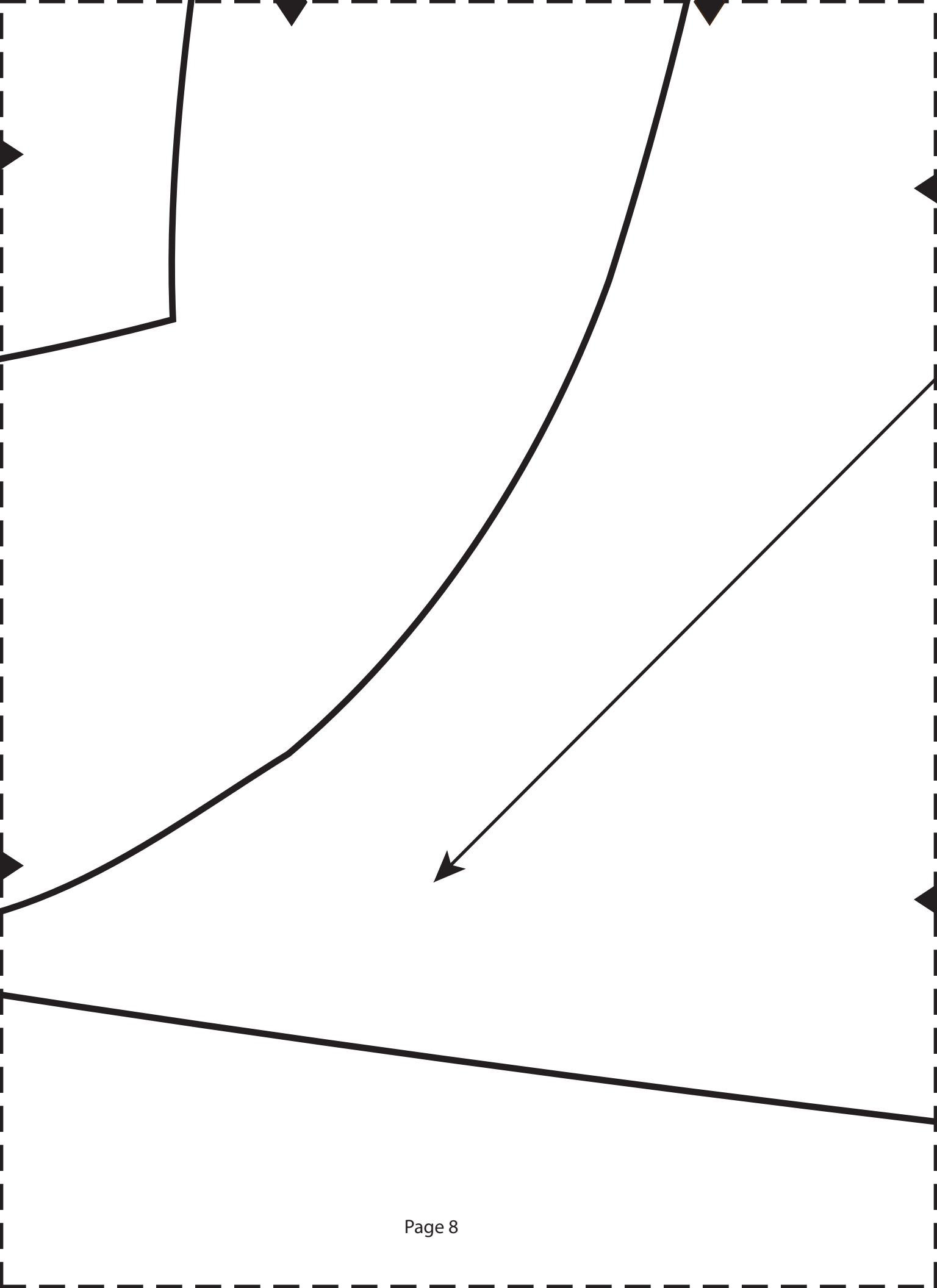
Willow and Stitch Tuesday Tee

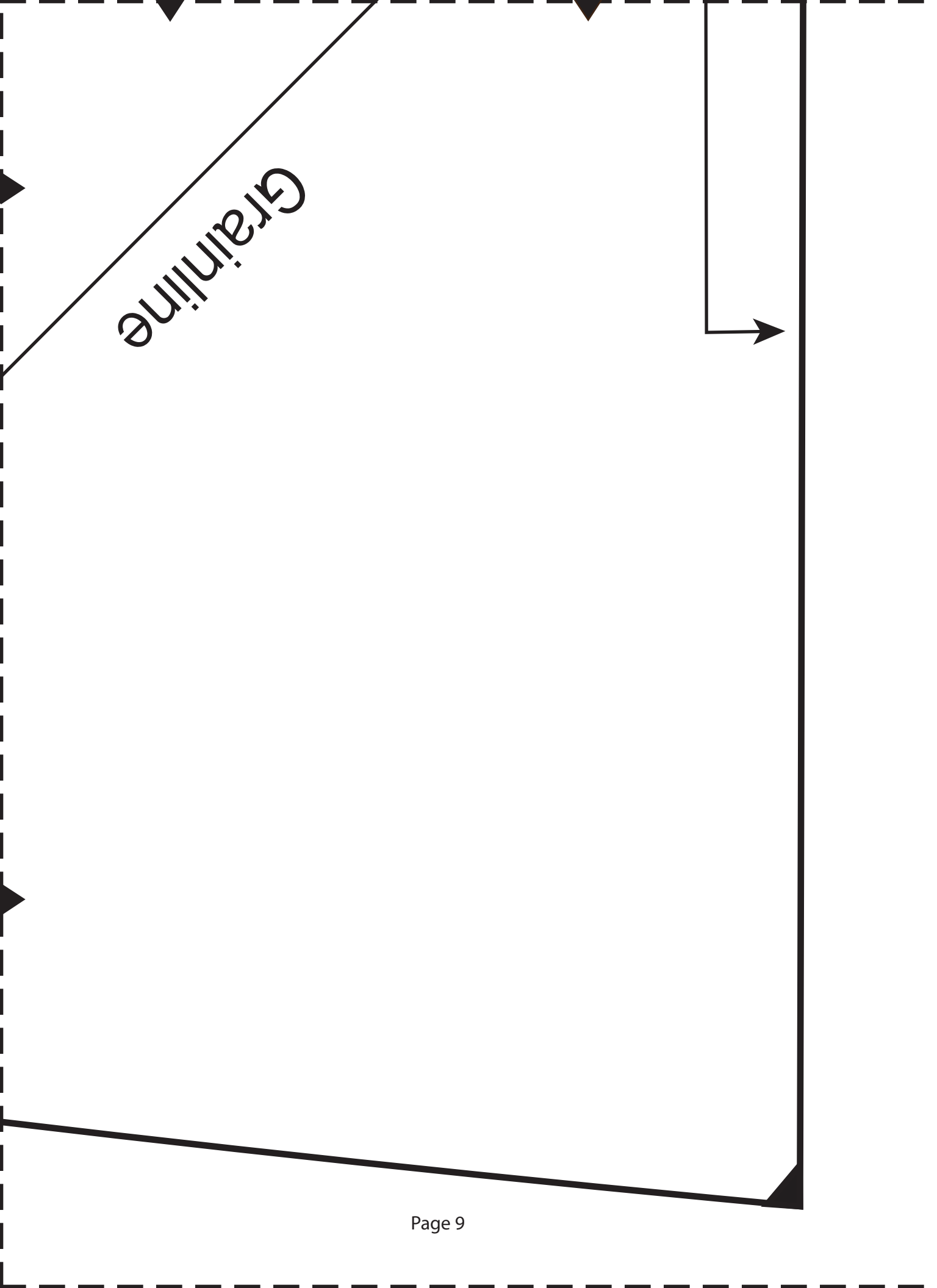
Size Small - Free Copy

While this is a free pattern, please do not email copies to your family and friends, refer them instead to my website to download their own copy. Thank you for your support.

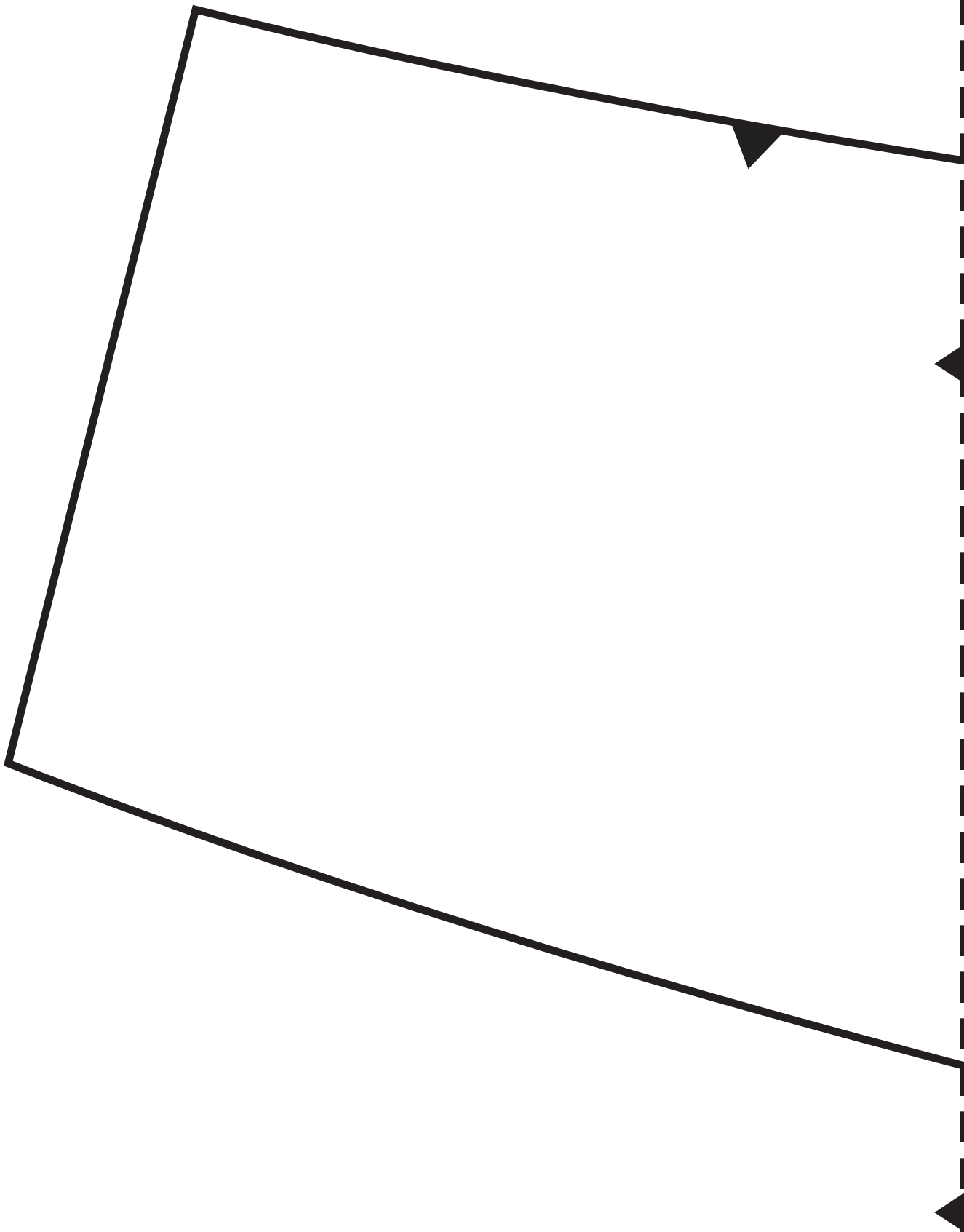
© Jessica Wright 2015. All rights reserved.

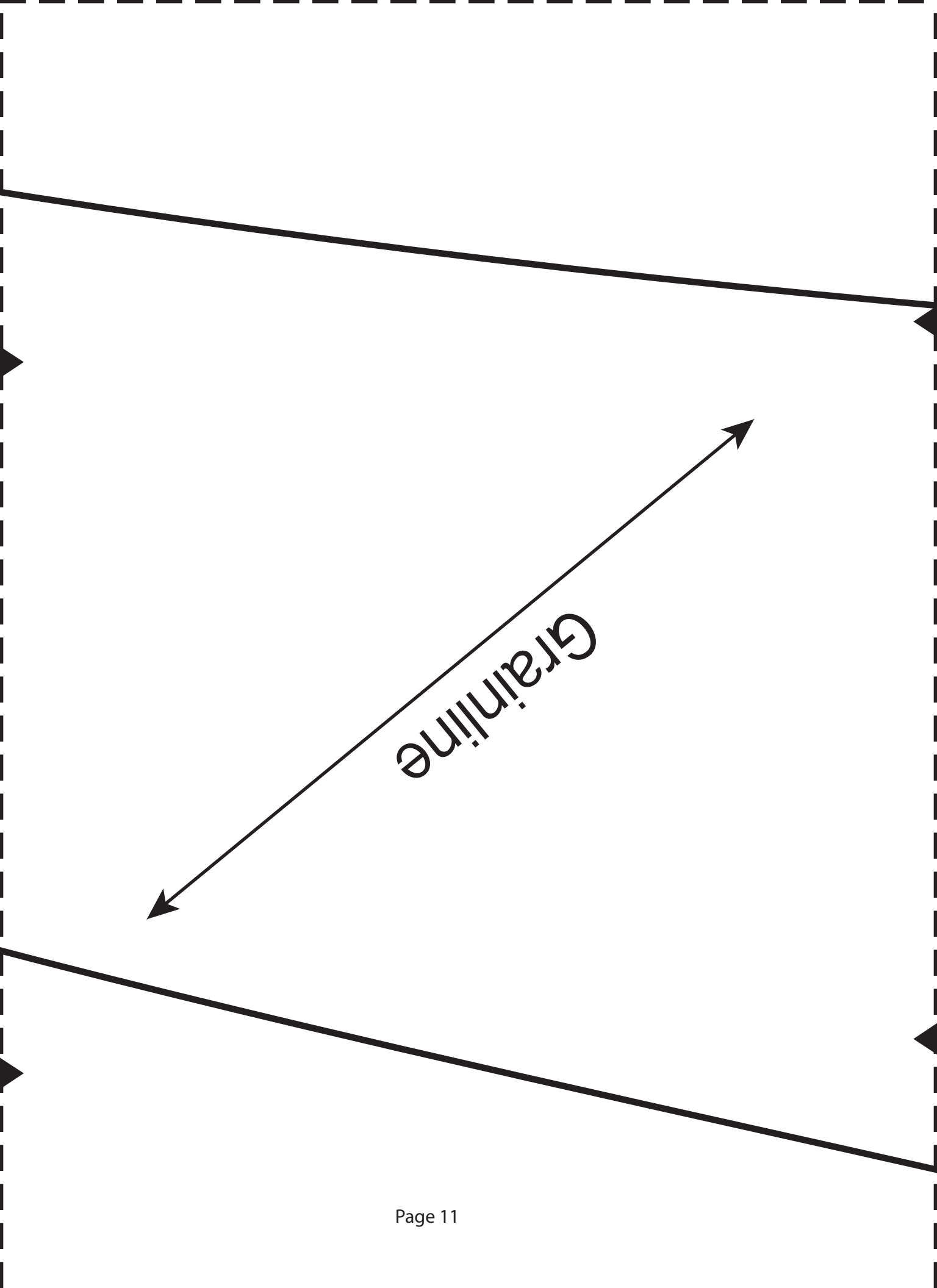
www.willowandstitch.com





Grainline





The diagram shows a pattern piece for the upper back of a 'Tuesday Tee'. It is a large, roughly rectangular shape with a curved bottom edge. A vertical dashed line on the left side indicates a fold line. Arrows point to the top-left, top-right, and bottom-right corners, indicating where to cut. A small rectangular piece is attached to the right side, with arrows indicating its orientation.

Tuesday Tee

Upper Back
Cut 1 on the fold

© Jessica Wright 2015. All rights reserved.

www.willowandstitch.com