

Feeding Bib

A sewing pattern from Willow & Stitch
One size fits all (babies!)



Designer: Jessica Wright
Web: www.willowandstitch.com

Questions? Please feel free to email me at: willowandstitchdesign@gmail.com

Terms of use:

This pattern is for personal use only. Please do not copy or share with family and friends, regardless of whether this is a free pattern or not. Refer them instead to my website so that they can download a copy for themselves. I rely on the honesty of my customers to protect my business and thank you sincerely for respecting this and supporting me in doing what I love.

About this pattern:

These bibs are really easy and quick to make and look so cute. They feature a handy pocket at the bottom for catching spills and when you're done you can take it off and use the toweling backing for a quick face wipe.

This project is a great way to use up fabric scraps, and you don't have to limit yourself to printed cotton. Try using denim, linen or even corduroy to add texture to your sewing.

I like to back my bibs with cotton toweling but you could use fleece, bamboo or microfiber instead. You could also make the bibs without the pocket if you wished, simply omit that step.

Skill Level:

This project is suitable for beginners and is simple and quick to make.

Cottage Industry

I am happy to support cottage industry and therefore do not require you to purchase a special license in order to sell items made from this pattern. However I would ask that you respect my copyright and follow the following conditions:

1. Items must be made individually by hand and not mass produced.
2. Items may only be made by the individual who purchased the pattern (please keep a copy of your receipt – where applicable – as proof of purchase).
3. Credit is given to Willow & Stitch as the pattern designer on a tag affixed to each item and, if selling online, the listing must contain a direct link to where the pattern can be purchased.
4. You may alter the pattern but must still link to the original pattern and credit Willow & Stitch on the item's tags and listings.

Materials Required

38 x 30cm (15 x 12") Main Fabric
38 x 30cm (15 x 12") Backing
28 x 30cm (11 x 12") Contrast
2cm (3/4") of approx 2cm (3/4") wide Velcro

Note: Remember to always wash and dry your fabric before cutting to ensure against shrinkage – this is especially important when using 2 different fabrics which may shrink differently.

Printing Instructions

When printing, be sure to print at 100%. Do not scale. Pattern will print correctly on A4 or US letter paper.

Page 9 contains a 2.5cm (1") square that you can measure after printing to check that your pattern pieces are going to be the correct size.

Please consider the environment before you print and print only what you need.

To print only the pattern pieces: Select pages 9-12.

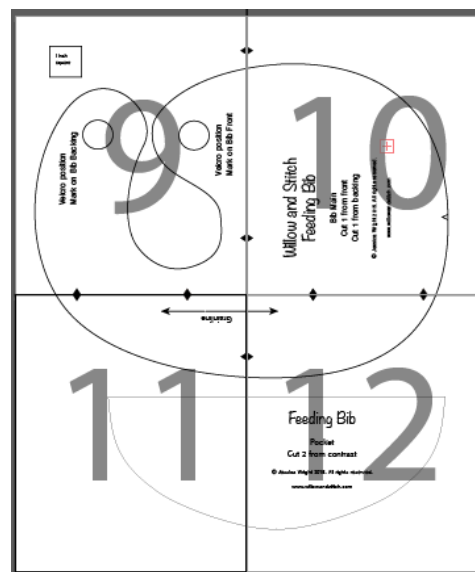
Assembling Pattern Pieces

The pattern pages will need to be joined together before cutting.

Cut pages along the trim lines and join pages by carefully aligning the triangles.

Note: Seam allowances are included in all pattern pieces.

Use a disappearing fabric marker or tailors chalk to transfer all pattern markings to your fabric.



Sewing Instructions

Make and attach the pocket:

Place the 2 pocket pieces one on top of the other with right sides together. Join the pieces with a 1 cm (1/2") seam along the top edge only. Turn to the right side, refolding the pocket with wrong sides together and press. Topstitch along the top edge, sewing 5 mm (1/8") from the edge.



Take your bib main front and, with right side facing up, match and pin the centre bottom notches of the bib and the pocket.



Pin the rest of the pocket to the bib, making sure that the edges align. You will need to ease the edges together, particularly at the top corners. The pocket is larger than the bib so that it will sit away from the body and catch dribbles.



Adjust your stitch length to 5mm and baste the pocket to the bib main, sewing a few 5 mm (1/4') from the edge.



Join the bib front and back:

Lay the bib main and backing on top of one another, right sides together (the pocket will be sandwiched between the two). Pin in place.

Reset your stitch length to normal and sew around the edges of the bib to join the front and back pieces with a 1 cm (1/2") seam allowance. Leave a 10 cm (4") gap for turning on one of the straighter edges. Backstitch at either side of the turning hole.



Clip your seam allowance every centimeter (1/2"), taking care not to cut through your line of stitching. Do not clip the seam allowance at the turning hole.

Turn your bib to the right side. You may find it handy to use a knitting needle or chopstick to push out the corners, particularly for the neck strap.

Press with a hot steam iron and fold under the seam allowance at the turning hole. Pin in place.

Topstitch close to the edge right around the bib, sealing the turning hole.



Attach the fastening:



Cut a 2cm (3/4") piece of Velcro and trim the corners to form a circle. Position the Velcro as indicated on the pattern.

Attach one half to the toweling side of the neck strap sewing a few mm (1/8") from the edge and going around twice for extra strength.

Attach the other half of the Velcro to the bib front using the same method.

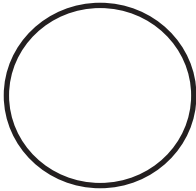
And You're Done!

I hope you love your new bib and that you have enjoyed this Tutorial. I'd love to see what you've made and see your bibs in use. Use the #WillowandStitch on instagram or upload your photos to the Willow and Stitch Flickr pool.

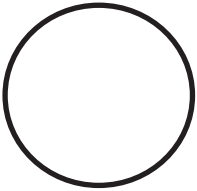




Velcro position
Mark on Bib Backing



Velcro position
Mark on Bib Front



Willow and Stitch Feeding Bib

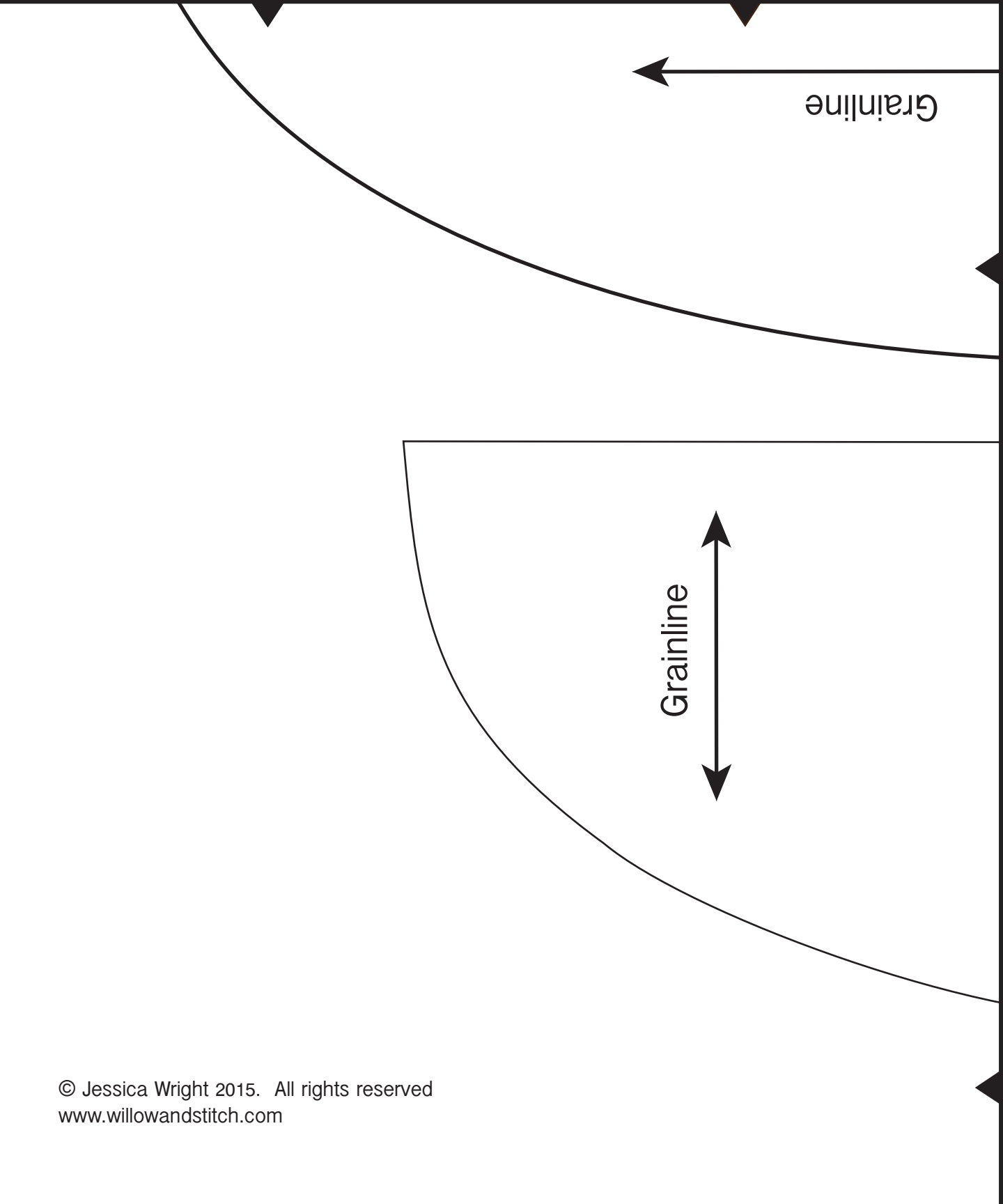
Bib Main

Cut 1 from front

Cut 1 from backing

© Jessica Wright 2015. All rights reserved.

www.willowandstitch.com



The diagram shows a pattern for a feeding bib. It consists of a large rectangular piece with a curved bottom edge. A horizontal line near the top indicates where to attach a pocket. An arrow on the left points to the right, indicating the direction of the fabric grain. A small triangle on the bottom left corner indicates a fold line.

Feeding Bib

Pocket
Cut 2 from contrast

© Jessica Wright 2015. All rights reserved.

www.willowandstitch.com

© Jessica Wright 2015. All rights reserved
www.willowandstitch.com