

# Dribble Bib

## A Free Pattern by Willow & Stitch

Skill Level: Suitable for Beginners.



Designer: Jessica Wright  
Web: [www.willowandstitch.com](http://www.willowandstitch.com)

Questions? Please feel free to email me at: [willowandstitchdesign@gmail.com](mailto:willowandstitchdesign@gmail.com)  
there is a real live person who cares (me!) at the other end.

## About this pattern:

Thank you for downloading this dribble bib pattern.

Sewing instructions are contained in my blog post. Click here for the link: [Dribble Bib Tutorial](#)

## Terms of use:

This pattern is for personal use only. Please do not copy or share with family and friends. Refer them instead to my website so that they can download a copy for themselves. I rely on the honesty of my customers to protect my business and thank you sincerely for respecting this and supporting me in doing what I love.

## Cottage Industry

I am happy to support cottage industry and therefore do not require you to purchase a special license in order to sell items made from this pattern. However I would ask that you respect my copyright and follow the following conditions:

1. Items must be made individually by hand and not mass produced.
2. Credit is given to Willow & Stitch as the pattern designer on a tag affixed to each item and, if selling online, the listing must contain a direct link to where the pattern can be purchased / downloaded.
3. You may alter the pattern but must still link to the original pattern and credit Willow & Stitch on the item's tags and listings.

## Printing Instructions

When printing, be sure to print at 100%. Do not scale. Pattern will print correctly on A4 or US letter paper. Pattern page contains a 2.5cm (1") square that you can measure after printing to check that your pattern piece is going to be the correct size.

To assemble the pattern, cut along the dotted lines and align the numbered triangles, then tape the pattern pieces together.

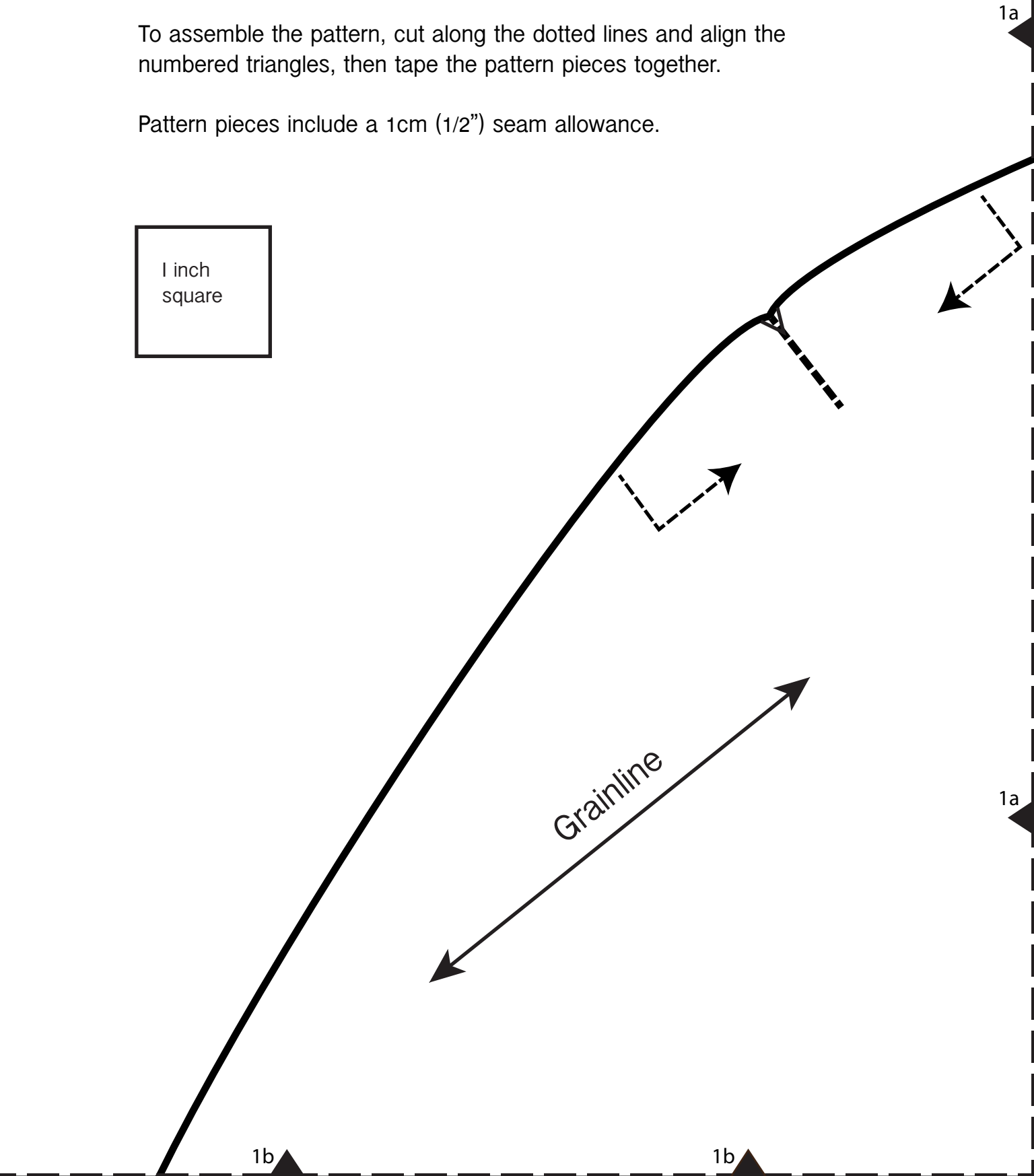
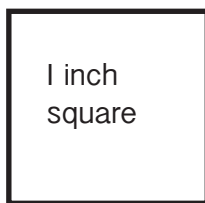
Pattern pieces include a 1cm (1/2") seam allowance.

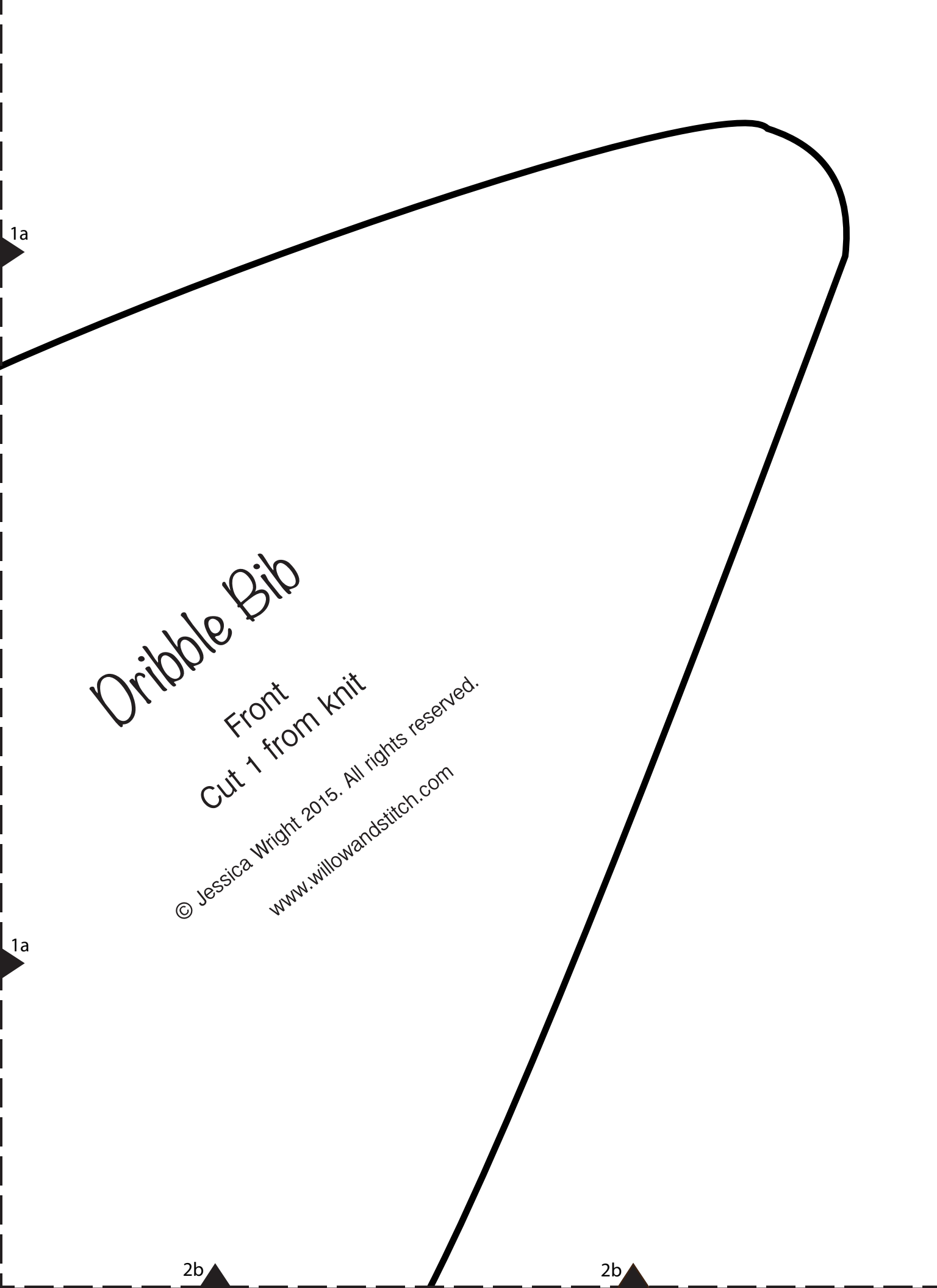
## Printing Instructions:

Be sure to print at 100%. Do not scale. Pattern will print correctly on A4 or US letter paper.

To assemble the pattern, cut along the dotted lines and align the numbered triangles, then tape the pattern pieces together.

Pattern pieces include a 1cm (1/2") seam allowance.





# Dribble Bib

Front

Cut 1 from knit

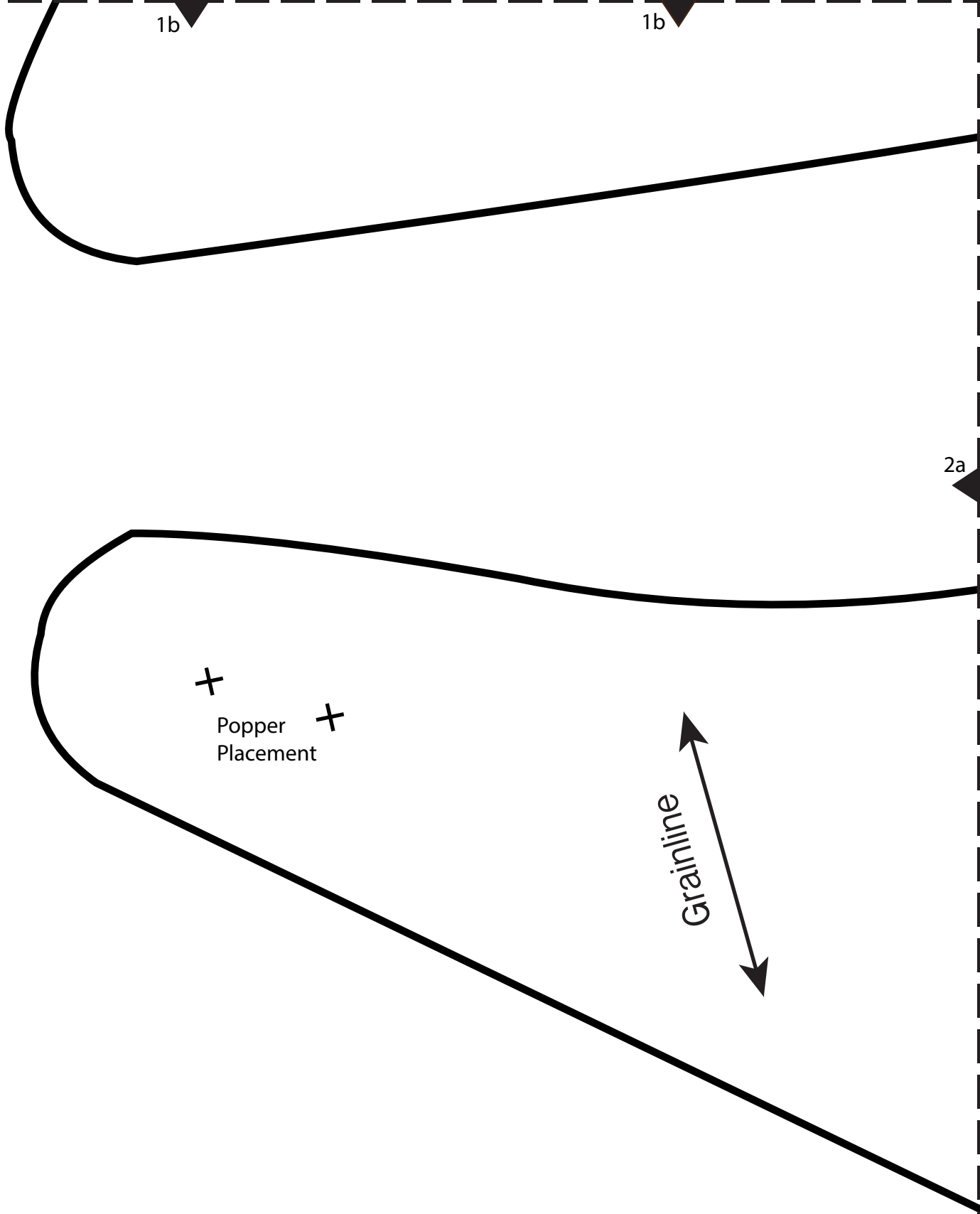
© Jessica Wright 2015. All rights reserved.  
[www.willowandstitch.com](http://www.willowandstitch.com)

1a

1a

2b

2b



2b

2b



Popper  
Placement

2a



Dribble Bib

Backing  
Cut 1 from backing

© Jessica Wright 2015. All rights reserved.

[www.willowandstitch.com](http://www.willowandstitch.com)

2a